



## Castlegar & Area Investment Profile 2010

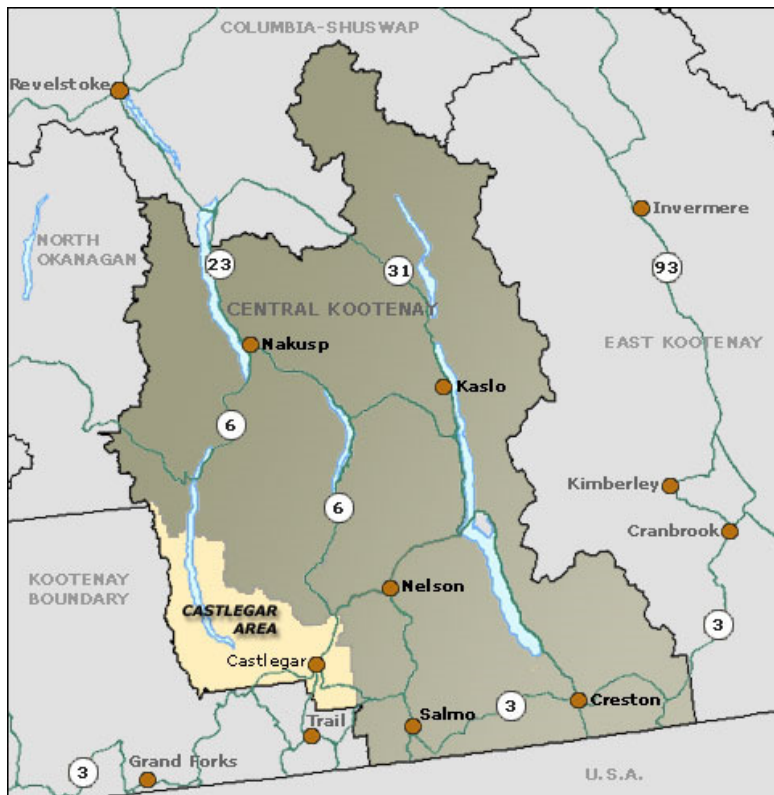
# Table of Contents

|   |    |
|---|----|
| TABLE OF CONTENTS .....   | 2  |
| WELCOME.....  | 4  |
| DEMOGRAPHICS.....   | 5  |
| POPULATION.....   | 5  |
| HOUSEHOLD INCOME (2006).....  | 5  |
| LANGUAGE KNOWLEDGE (AGE 15 TO 64) – ABILITY TO HOLD A CONVERSATION..... | 5  |
| HOUSING .....   | 6  |
| AVERAGE HOUSING COSTS .....   | 6  |
| LABOUR FORCE.....   | 6  |
| LABOUR FORCE PARTICIPATION RATE (15-64 YEARS) .....                     | 6  |
| LABOUR FORCE BY SECTOR .....  | 6  |
| LABOUR FORCE BY OCCUPATION .....  | 7  |
| LEADING EMPLOYERS .....   | 7  |
| WORKFORCE EDUCATION ATTAINMENT (25-64 YEARS OF AGE) .....               | 8  |
| ECONOMIC DEPENDENCIES (AFTER-TAX INCOMES).....                          | 8  |
| TRANSPORTATION .....  | 9  |
| DISTANCE TO MAJOR CENTRES .....   | 9  |
| CLOSEST COMMERCIAL AIRPORTS .....                                       | 9  |
| CANADIAN BORDER SERVICES INFORMATION .....                              | 10 |
| TAXATION .....  | 11 |
| MUNICIPAL TAX RATE (2008).....  | 11 |
| DEVELOPMENT COST CHARGES .....  | 11 |
| CORPORATE INCOME TAX / FRANCHISE TAX.....                               | 11 |
| PERSONAL INCOME TAX RATE (RANGE) .....                                  | 11 |
| SALES / USE TAX RATE .....  | 12 |
| TELEPHONE SUBJECT TO SALE / USE TAX .....                               | 12 |
| SALES TAX RATE BY UTILITY .....   | 12 |
| MACHINERY & EQUIPMENT SUBJECT TO SALE / USE TAX.....                    | 12 |
| SALES / USE TAX ON TANGIBLE PROPERTY .....                              | 12 |
| SALES / USE TAX ON INTANGIBLE PROPERTY.....                             | 13 |
| BUSINESS SUPPORT SERVICES.....  | 13 |
| PAYROLL COSTS .....   | 14 |
| PAYROLL TAXES.....  | 14 |
| UNEMPLOYMENT INSURANCE (EMPLOYMENT INSURANCE) .....                     | 14 |
| UTILITIES .....   | 15 |
| WATER & SEWER WATER AVAILABILITY .....                                  | 15 |
| WATER TREATMENT.....  | 15 |
| SEWER TREATMENT .....   | 15 |
| ELECTRIC POWER .....  | 15 |
| LANDFILL & WASTE MANAGEMENT .....                                       | 16 |
| TELECOMMUNICATIONS .....  | 16 |
| QUALITY OF LIFE.....  | 17 |

|   |    |
|---|----|
| CLIMATE .....                                     | 17 |
| CULTURE AND RECREATION.....                       | 17 |
| EDUCATION.....                                    | 18 |
| SELKIRK COLLEGE .....                             | 18 |
| KOOTENAY-COLUMBIA SCHOOL DISTRICT 20.....         | 18 |
| EDUCATIONAL CHOICES .....                         | 21 |
| HEALTH.....                                       | 22 |
| POPULATION AND DEMOGRAPHICS.....                  | 22 |
| HEALTH STATUS.....                                | 22 |
| NON-MEDICAL DETERMINANTS OF HEALTH .....          | 22 |
| HEALTH SERVICE PERFORMANCE.....                   | 23 |
| COMMUNITY AND HEALTH SYSTEM CHARACTERISTICS ..... | 24 |

## Welcome

Thank you for your interest in the Castlegar area. We are confident that you will be impressed with the business and lifestyle opportunities that exist in our growing and vibrant region. *Invest Kootenay* is a joint-initiative of local governments, economic development organizations and Chambers of Commerce with the aim of attracting and retaining investment. The majority of statistics provided in this profile include the municipality of Castlegar and rural Electoral Areas I and most of J of the Central Kootenay Regional District. It is equivalent to the Castlegar Local Health Area.



We invite you to come and discover the advantages of doing business in the Kootenay region – where opportunity meets lifestyle. For a customized investor package or to learn more about our Ambassador Program, please contact:

PAMELA MCLEOD, EXECUTIVE DIRECTOR  
CASTLEGAR AND DISTRICT CHAMBER OF COMMERCE  
1995 6<sup>th</sup> Avenue  
Castlegar BC V1N 4B7  
Ph: (250) 365-6313 • Fax: (250) 365-5778  
E-mail: [pam.mcleod@shawbiz.ca](mailto:pam.mcleod@shawbiz.ca)  
[www.castlegar.com](http://www.castlegar.com)

## Demographics

| <b>Population</b>  |                   |                       |
|--------------------|-------------------|-----------------------|
| <b>Age Group</b>   | <b>Population</b> | <b>% Distribution</b> |
| Under 18 years     | 2,545             | 20.4%                 |
| 18 – 34 years      | 2,105             | 16.9%                 |
| 35 – 54 years      | 4,005             | 32.1%                 |
| 55 – 74 years      | 2,845             | 22.8%                 |
| 75 years and over  | 970               | 7.8%                  |
| Total – Age Groups | 12,465            | 100.0%                |
| Median Age         | 44.0%             |                       |

| <b>Household Income (2006)</b>  |               |                       |
|---------------------------------|---------------|-----------------------|
| Number of Households in 2006    | 5,250         |                       |
| Median Household Income in 2006 | C \$53,494    |                       |
| <b>Household Income Group</b>   | <b>Number</b> | <b>% Distribution</b> |
| Under - \$35,000 CDN            | 1,700         | 32.4%                 |
| \$35,000 CDN - \$49,000 CDN     | 770           | 14.7%                 |
| \$50,000 CND - \$79,999 CDN     | 1,110         | 21.1%                 |
| \$75,000 CND – Above            | 1,655         | 31.5%                 |

*Source: Statistics Canada, Census, 2006*

| <b>Language Knowledge (age 15 to 64) – Ability to Hold a Conversation</b> |                     |                   |
|---|---------------------|-------------------|
|   | <b>Total Number</b> | <b>% of Total</b> |
| English   | 10,270              | 100.0%            |
| Russian   | 1,380               | 13.4%             |
| French  | 610                 | 5.9%              |
| Portuguese  | 215                 | 2.1%              |
| German  | 190                 | 1.8%              |
| Italian   | 90                  | 0.9%              |
| Spanish   | 90                  | 0.9%              |
| Chinese   | 45                  | 0.4%              |
| Ukrainian   | 40                  | 0.4%              |
| Dutch   | 35                  | 0.3%              |

*Source: Statistics Canada, Census, 2006*

## Housing

### Average Housing Costs

|                     |           |
|---------------------|-----------|
| Single Family Homes | \$230,149 |
| Multi-Family Homes  | \$214,200 |

### Taxes and Charges on a Representative House

|  |         |
|--|---------|
| Residential Property Taxes and Charges | \$2,163 |
|--|---------|

*Source: Ministry of Community Development, 2007/2008*

## Labour Force

### Labour Force Participation Rate (15-64 years)

|        |       |
|--------|-------|
| Male   | 69.4% |
| Female | 57.6% |
| Total  | 63.0% |

### Civilian Labour Force

|                   |           |
|-------------------|-----------|
| Unemployment Rate | 7% (2006) |
|-------------------|-----------|

### Labour Force by Sector

#### Non-Agricultural Labour Force Reported by Place of Residence (2006)

|  | Total Number Employed | % of Total Employed Persons |
|--|-----------------------|-----------------------------|
| Forestry & Logging                             | 75                    | 1.2%                        |
| Mining and Oil & Gas                           | 25                    | 0.4%                        |
| Construction                                   | 515                   | 8.2%                        |
| Manufacturing                                  | 1,090                 | 17.4%                       |
| Transportation, Warehousing & Public Utilities | 405                   | 6.4%                        |
| Wholesale Trade                                | 120                   | 1.9%                        |
| Retail Trade                                   | 870                   | 13.9%                       |
| Services                                       | 2,595                 | 41.3%                       |
| Finance, Insurance, Real Estate & Leasing      | 275                   | 4.4%                        |
| Government                                     | 250                   | 4.0%                        |
| Total  | 6,280                 | 100.0%                      |

*Source: Statistics Canada, Census, 2006*

**Labour Force by Occupation****Reported by Place of Residence (2006)**

|                                     | <b>Total Number Employed</b> | <b>% of Total Employed Persons</b> |
|-------------------------------------|------------------------------|------------------------------------|
| Administrative / Clerical           | 820                          | 13.0%                              |
| Executive                           | 20                           | 0.3%                               |
| Farming / Forestry                  | 115                          | 1.8%                               |
| Labourers / Handlers                | 855                          | 13.5%                              |
| Machine Operators                   | 495                          | 7.8%                               |
| Management                          | 390                          | 6.2%                               |
| Precision Production                | 150                          | 2.4%                               |
| Professional                        | 330                          | 5.2%                               |
| Protective Services                 | 75                           | 1.2%                               |
| Sales                               | 325                          | 5.1%                               |
| Services                            | 1,755                        | 27.8%                              |
| Technician                          | 730                          | 11.6%                              |
| Transportation and Public Utilities | 260                          | 4.1%                               |
| Total                               | 6,320                        | 100.0%                             |

Source: Statistics Canada, Census, 2006

| <b>Leading Employers</b>        |                                    |                         |                    |
|---------------------------------|------------------------------------|-------------------------|--------------------|
| <b>Sector</b>                   | <b>Company</b>                     | <b>Product/ Service</b> | <b># Employees</b> |
| Education                       | School District #20                | Education               | 300                |
| Finance, Insurance, Real Estate | Castlegar Credit and Savings Union | Financial Services      | 41                 |
| Finance, Insurance, Real Estate | CIBC                               | Financial Services      | 24                 |
| Finance, Insurance, Real Estate | Kootenay Savings                   | Financial Services      | 24                 |
| Government                      | Selkirk College                    | Education               | 415                |
| Health Care                     | Castlegar and District Hospital    | Health Care             | 230                |
| Manufacturing                   | Celgar Pulp                        | Pulp Mill               | 455                |
| Manufacturing                   | Pope and Talbot                    | Sawmill                 | 300                |
| Primary Industry                | Teck Cominco                       | Mining                  | 2,000              |

Source: Invest BC, 2009

**Workforce Education Attainment (25-64 Years of Age)**

|  |       |     |
|--|-------|-----|
| Less than High School Diploma                | 910   | 14% |
| High School Diploma Only                     | 1,845 | 28% |
| Apprenticeship/Trades Certificate/Diploma    | 1,250 | 19% |
| College/University Certificate/Diploma       | 1,770 | 27% |
| University Bachelors Degree                  | 440   | 7%  |
| University Medical/Dentistry/Optomety Degree | 30    | 0%  |
| University Graduate Degree/Certificate       | 280   | 4%  |

*Source: Statistics Canada, Census, 2006*

**Economic Dependencies (After-Tax Incomes)**

|                   |     |
|-------------------|-----|
| Public Sector     | 22% |
| Transfer Payments | 17% |
| Forestry          | 23% |
| Other Non-Emp.    | 14% |
| Construction      | 9%  |
| Tourism           | 5%  |
| Other Basic       | 4%  |
| Mining            | 4%  |
| High Tech         | 1%  |
| Agriculture       | 1%  |

*Source: BC Stats Economic Dependencies, 2006*

# Transportation

| <b>Distance to Major Centres</b> |                   |              |
|----------------------------------|-------------------|--------------|
| <b>Metro Area</b>                | <b>Kilometres</b> | <b>Miles</b> |
| Kelowna, BC                      | 303               | 188          |
| Kamloops, BC                     | 458               | 285          |
| Vancouver, BC                    | 615               | 382          |
| Calgary, AB                      | 616               | 383          |
| Seattle, WA                      | 684               | 425          |
| Victoria, BC                     | 696               | 432          |
| Portland, OR                     | 802               | 498          |
| Edmonton, AB                     | 907               | 564          |

## ***Closest Commercial Airports***

| <b>Castlegar Airport</b>                       |  |
|--|--|
| Website  | <a href="http://www.castlegar.ca/devserv_air.htm">www.castlegar.ca/devserv_air.htm</a> |
| Hub Status                                     | Regional   |
| Distance from Community                        | Located in Castlegar   |
| No. of Runways                                 | 1  |
| Runway Lengths                                 | 1,615 metres, 5329.5 ft  |
| Carriers - Passenger                           | Air Canada Jazz, Highland Helicopters, High Alpine Air Services, Inc.                  |
| Days Closed due to Weather in the Last 3 Years | 6  |
| Flights to Largest Cities Served               | Weekly Non-stop flights  |
| Calgary  | 7  |
| Vancouver                                      | 19   |

| <b>Nelson Airport</b>   |                                  |
|-------------------------|----------------------------------|
| Distance from Community | 42 kilometres                    |
| No. of Runways          | 1                                |
| Runway Lengths          | 940 metres, 3,100 ft.            |
| Carriers - Passenger    | High Alpine, Kokanee Helicopters |

| <b>Kelowna Airport</b>  |  |
|-------------------------|--|
| Website                 | <a href="http://www.kelownairport.com">www.kelownairport.com</a> |
| Hub Status              | International  |
| Distance from Community | 303 kilometers, 188 miles  |
| Hours of Operation      | 4:30 am – 11:30 pm   |
| No. of Runways          | 1  |
| Runway Lengths          | 2,225 meters, 7342.5 ft.   |
| Carriers - Passenger    | Air Canada, Horizon Air, WestJet Airlines,                       |

|  |  |
|--|--|
|  | Regional1, Central Mountain Air                                |
| Carriers - Charter                             | Carson Air, Northwestern Air                                   |
| Carriers - Air Cargo                           | Air Canada, Horizon Air, WestJet Airlines, Central MountainAir |
| Days Closed due to Weather in the Last 3 Years | 0  |
| Total Weekly Non-Stops to All Cities Served    | 224  |
| Flights to Largest Cities Served               | Weekly Non-stop Flights  |
| Calgary  | 70   |
| Edmonton                                       | 35   |
| Seattle  | 28   |
| Vancouver                                      | 84   |
| Victoria                                       | 7  |

### Canadian Rockies International Airport

|  |  |
|--|--|
| Website  | <a href="http://www.flycanadianrockies.com">www.flycanadianrockies.com</a> |
| Hub Status                                     | International  |
| Distance from Community                        | 229 kilometers, 142 miles  |
| Hours of Operation                             | 24 hours / 7 days  |
| No. of Runways                                 | 1  |
| Runway Lengths                                 | 1,829 meters   |
| Carriers - Passenger                           | Air Canada, Pacific Coastal, Delta   |
| Carriers – Charter                             | Kootenay Airways   |
| Days Closed due to Weather in the Last 3 Years | 1  |
| Total Weekly Non-Stops to All Cities Served    | 56   |
| Flights to Largest Cities Served               | Weekly Non-stop Flights  |
| Calgary  | 35   |
| Vancouver                                      | 21   |

| Canadian Border Services Information   |                |
|--|----------------|
| Canadian Rockies Airport   | (250)417-2223  |
| Kingsgate (south of Yahk) 24 yrs.  | (250) 424-5292 |
| Eastport (US side)   | (208) 267-3966 |
| Rykerts (south of Creston) 8am – 12am Oct. 31-April 23; 7am-11pm April 24-Oct 30 | (250) 428-2575 |
| Nelway (south of Salmo) 8am-12am   | (250)357-9940  |
| Port Hill (US side)  | (208) 267-5309 |
| Waneta (south of Fruitvale) 9am-5pm  | (250) 367-9656 |
| Paterson (south of Rossland) 24hrs. US side 8am-12am                             | (250) 362-7341 |
| Cascade (south of Christina Lake) 8am-12am                                       | (250)447-9418  |

Canadian Border Services Information (1-800-461-9999)

# Taxation

## Municipal Tax Rate (2008)

|                |         |
|----------------|---------|
| Business       | 13.3674 |
| Light Industry | 13.3241 |
| Major Industry | 29.4864 |
| Residential    | 2.4381  |
| Utility        | 33.4185 |

\*Dollars of tax per \$1,000 taxable value

Source: UBCM website (<http://www.civicinfo.bc.ca/81.asp>), 2009

## Development Cost Charges

|                                   |       |
|-----------------------------------|-------|
| Commercial: \$ per square meter   | 12.27 |
| Industrial: \$ per square meter   | 5.66  |
| Residential: \$ per dwelling unit | 4803  |

Source: Ministry of Community Development, February 2008

## Corporate Income Tax / Franchise Tax

| Federal  | Small Business  | Mfg             | Non-Mrg         |
|--|-----------------|-----------------|-----------------|
| Rate (range)   | 11.0%           | 19.0%           | 19.0%           |
| Formula (e.g. Sales, Property & Payroll)                 | N/A             | N/A             | N/A             |
| Accelerated Depreciation Permitted                       | Yes             | Yes             | Yes             |
| <b>Provincial</b>  |                 |                 |                 |
| Rate (range)   | 3.5%            | 11.0%           | 11.0%           |
| Formula (e.g. Sales, Property & Payroll)                 | Sales & Payroll | Sales & Payroll | Sales & Payroll |
| Accelerated Depreciation Permitted                       | No              | No              | No              |
| <b>Total Federal and Provincial Corporate Income Tax</b> | <b>14.5%</b>    | <b>30.0%</b>    | <b>30.0%</b>    |

Source: InvestBC, 2009

## Personal Income Tax Rate (Range)

|                                 | Federal       | Provincial (State) | Local |
|---------------------------------|---------------|--------------------|-------|
| Capital Gains                   | 7.50%-14.50%  | 2.53%-7.35%        | N/A   |
| Earned Income                   | 15.00%-29.00% | 5.06%-14.70%       | N/A   |
| Unearned Income (e.g. Dividend) | 0.00%-14.55%  | 0.00%-3.92%        | N/A   |

Source: InvestBC, 2009

| <b>Sales / Use Tax Rate</b>              |             |  |
|--|-------------|--|
|  | <b>Rate</b> | <b>Notes</b>   |
| Federal (Goods and Service Tax) -- GST   | 5.0%        | GST on business inputs is fully recoverable  |
| Local                                    | N/A         | British Columbia has no local sales tax  |
| Provincial (State) Sales Tax -- PST      | 7.0%        | Exemptions include: production machinery and equipment, direct materials, catalysts, reagents, software development equipment, construction labour |
| Total (Effective Combined Rate) Business | 7.0%        | GST on business inputs is fully recoverable  |

*Source: InvestBC, 2009*

| <b>Telephone Subject to Sale / Use Tax</b> |             |  |
|--|-------------|--|
| <b>Type</b>                                | <b>Rate</b> | <b>Notes</b>   |
| Local                                      | 7.0%        | GST is fully recoverable   |
| Long Distance In Province                  | 7.0%        | Toll free inbound service is tax-exempt. GST is fully recoverable. |
| Long Distance out of Province              | 7.0%        | Toll free inbound service is tax-exempt. GST is fully recoverable. |

*Source: InvestBC, 2009*

| <b>Sales Tax Rate by Utility</b> |             |                          |
|----------------------------------|-------------|--------------------------|
|                                  | <b>Rate</b> | <b>Notes</b>             |
| Electric Power                   | 7.0%        | GST is fully recoverable |
| Natural Gas                      | 7.0%        | GST is fully recoverable |
| Fuel Oil                         | 7.0%        | GST is fully recoverable |
| Water                            | 0%          |                          |
| Sewer                            | 0%          |                          |
| Hazardous Waste                  | 7.0%        | GST is fully recoverable |

*Source: InvestBC, 2009*

| <b>Machinery &amp; Equipment Subject to Sale / Use Tax</b> |             |  |
|--|-------------|--|
| <b>Type</b>  | <b>Rate</b> | <b>Notes</b>   |
| Production   | 0%          |  |
| Non-Production   | 7.0%        | Equipment used directly in software development is tax-exempt. GST is fully recoverable. |
| Pollution Control  | 0%          | GST is fully recoverable.  |
| Office Furniture / Fixtures / Equipment                    | 0%          | GST is fully recoverable.  |

*Source: InvestBC, 2009*

### **Sales / Use Tax on Tangible Property**

| Type                                       | Rate | Notes                     |
|--|------|---------------------------|
| Office Building Construction Materials     | 7.0% | GST is fully recoverable. |
| Industrial Building Construction Materials | 7.0% | GST is fully recoverable. |
| Manufacturers' Raw Materials               | 0%   | GST is fully recoverable. |
| Standard Software                          | 7.0% | GST is fully recoverable. |
| Custom Software                            | 7.0% | GST is fully recoverable. |

*Source: InvestBC, 2009*

| Sales / Use Tax on Intangible Property |      |       |
|--|------|-------|
| Type                                   | Rate | Notes |
| Accounts Receivable                    | 0%   |       |
| Capital Stock                          | 0%   |       |
| Stock / Bond Transaction Fee           | 0%   |       |

*Source: InvestBC, 2009*

## Business Support Services

| Number of Business Support Services          |     |
|--|-----|
| Computer Consultants / Graphic Design        | 4   |
| Consultants                                  | 10  |
| Accountants / Income Tax Preparation         | 9   |
| Contractors                                  | 158 |
| Inspection / Appraisal                       | 2   |
| Engineering / Building Design                | 6   |
| Transportation / Delivery / Moving / Courier | 8   |

*Source: Invest Kootenay Research, 2009*

## Payroll Costs

| <b>Payroll Taxes</b>                              |            |  |
|---|------------|--|
| <b>Workers Compensation</b>                       |            | <b>Notes</b>   |
| Average Cost for All Industries per \$100 Payroll | C \$1.90   | Rates set by employer's business activity. Applies up to maximum gross earnings of C \$62,400 per year.  |
| Average Rate for Office Workers per \$100 Payroll | C \$0.30   | There is no separate rating for office occupations in British Columbia – the applicable industry rating applies to all workers. Rates for Business Services range from \$0.08 - \$0.70 per \$100 of payroll (average \$0.30). Applies up to maximum gross earnings of C \$62,400 per year. |
| Maximum Weekly Benefit                            | C \$808.16 | Maximum per employee set at 90% of average net earnings (after deductions for income taxes, Canada Pension Plan & Employment Insurance), up to a maximum wage of C\$62,400 per year.   |

*Source: InvestBC, 2009*

| <b>Unemployment Insurance (Employment Insurance)</b> |               |   |
|--|---------------|---|
| Taxable Base   | Gross Payroll | Up to a gross per worker salary of C \$39,000 per year.   |
| Percentage Rate (Employer Premium)                   |               |   |
| Average Among Existing Employers                     | 2.618%        | Maximum annual contribution per worker is C\$1,021. Employees also contribute at a rate of 1.87% up to an annual maximum of C\$729. |
| Average Among New Employers                          | 2.618%        | Maximum annual contribution per worker is C\$1,021. Employees also contribute at a rate of 1.87% up to an annual maximum of C\$729. |
| Maximum Weekly Benefits                              | C \$413.00    |   |

*Source: InvestBC, 2009*

# Utilities

## Water & Sewer Water Availability

|               |  |
|---------------|--|
| Major Sources | Arrow Lakes (Pump House)<br><i>Source: Invest BC, 2009</i> |
|---------------|--|

## Water Treatment

|                                     |                                 |
|-------------------------------------|---------------------------------|
| <b>Name of Provider</b>             | City of Castlegar (Arrow Lakes) |
| Rated Capacity (mgd)                | 0.3                             |
| Average Daily Demand (mgd)          | 2.5                             |
| Peak Demand (mgd)                   | 6                               |
| Chemical Breakdown of Water         | Chemical analysis available     |
| Cost per 1000 Gallons (Industrial)  | 0.95                            |
| Cost per 1000 Gallons (Residential) | 1.64                            |
| Water Connection Fee                | \$920-1250                      |

*Source: Invest BC, 2009*

## Sewer Treatment

|                            |                                |
|----------------------------|--------------------------------|
| <b>Name of Provider</b>    | City of Castlegar North Lagoon |
| Average Daily Demand (mgd) | 0.45                           |
| Cost per 1000 Gallons      | 1.64                           |
| Peak Demand (mgd)          | 0.5                            |
| Rated Capacity (mgd)       | 0.55                           |
| Sewer Connection Fee       | \$920-1050                     |
| Type of Service            | Secondary                      |

*Source: Invest BC, 2009*

## Electric Power

|                    |   |
|--------------------|---|
| Name of Company    | FortisBC  |
| Communities Served | Castlegar, Creston, Grand Forks, Kelowna, Oliver, Osoyoos, Penticton, Summerland, Trail |

## Average Cost per kWh - \$CDN (2004)

|  |        |
|--|--------|
| <b>Commercial Electricity Rates</b>                  |        |
| Small – 28% Load Factor (300 kW & 120,000 kWh)       | 7.01 ¢ |
| Medium – 56% Load Factor (1,000 kW & 400,000 kWh)    | 5.60 ¢ |
| Large 1 – 56% Load Factor (4,000 kW & 1,600,000 kWh) | 5.48 ¢ |
| Large 2 – 85% Load Factor (50,000 kVA)               | 4.32 ¢ |

### Natural Gas

|                                |  |
|--------------------------------|--|
| Name of Provider               | Terasen Gas 1-888-224-2710             |
| Rate Territory                 | Inland                                 |
| Firm Contract Rates (2006)     |  |
| Type of Customer               | General Firm Service (Rate Schedule 5) |
| Basic Charge (per month)       | C \$553.00                             |
| Administration Fee (per month) | N/A                                    |
| Demand Charge                  | C \$12.63                              |
| Delivery and Gas Charge        | C \$7.90                               |

Source: Invest BC, 2009

### Landfill & Waste Management

|  |  |
|--|--|
| Nearest Licensed Hazardous Waste Disposal Site           | There are no hazardous waste disposal sites in British Columbia. |
| No. of Licensed Hazardous Waste Haulers Serving the Area | 0  |

### Landfill Location(s)

| Location    | Capacity Left at Current Site | Plans for New Capacity |
|-------------|-------------------------------|------------------------|
| Ootischenia | 40 years                      | No                     |

Source: Invest Kootenay Research, 2009

### Telecommunications

|  |   |
|--|---|
| Number of Local Service Providers <sup>1</sup> | 5   |
| Name of Provider                               | The Net Idea, Shaw Internet, Specialty Electronics Ltd; Telus Internet Services; Uniserve.com |
| Address  | See Yellow Pages  |

### Service Characteristics of the Office

|   |                   |
|---|-------------------|
| Switch Technology                             | Digital           |
| Fiber Service Provided                        | Yes               |
| 100 Mbps LAN Service Available                | Yes               |
| Monitoring                                    | Remotely          |
| ISDN Available                                | Yes               |
| ADSL Available                                | Yes               |
| ADSL Available from this Switch               | Yes               |
| Central Office on Self-Healing Fiber Ring     | Contact Suppliers |
| Dual Feed from Two Separate Switching Offices | Contact Suppliers |
| Multiple Route Diversity                      | Yes               |

Source: Invest Kootenay Research, 2009

<sup>1</sup> Note: For a more accurate assessment, each supplier should be contacted and a separate profile compiled. Those answers shown reflect the best available of at least one of the suppliers.

## Quality of Life

| <b>Climate</b>                             |                   |            |                |
|--|-------------------|------------|----------------|
| <b>Average Daily Temperature (Celsius)</b> | <b>High</b>       | <b>Low</b> | <b>Average</b> |
| January                                    | 0                 | -5         | -3             |
| July                                       | 28                | 12         | 20             |
| Average Annual Rainfall                    | 533.2mm           |            |                |
| Average Annual Snowfall                    | 224.6cm           |            |                |
| Average Annual Windspeed (kph)             | 8.0 km/hr         |            |                |
| Weather Station Elevation                  | 494m              |            |                |
| Weather Station Name                       | Castlegar Airport |            |                |

*Source: Invest BC, 2009*

| <b>Culture and Recreation</b>        |                                  |
|--------------------------------------|----------------------------------|
| <b>Top Annual Events</b>             | <b>Date(s)</b>                   |
| The Kootenay Home and Lifestyle Expo | March                            |
| Sunfest                              | first week in June               |
| Dig Dirt Day                         | June                             |
| Pass Creek Fall Fair                 | September                        |
| Chocolate Jazz Fundraiser            | October                          |
| Winterfest / Christmas Tree Lighting | December (dates to be announced) |

*Source: Invest Kootenay Research, 2009*

| <b>Recreational Outlets (within a 2 hour drive)</b> | <b>Activity</b> |
|---|-----------------|
| Ainsworth Hot Springs                               | Hot springs     |
| Castlegar Golf Course                               | Golfing         |
| Columbia River                                      | Fishing         |
| Huger Keenleyside Dam                               | Dam Tours       |
| Kettle Valley Railway                               | Cycling         |
| Kootenay River                                      | Fishing         |
| Merry Creek   | Hiking          |
| Red Mountain  | Skiing          |
| Slocan River  | Kayaking        |
| Whitewater  | Skiing          |

*Source: Invest BC, 2009*

# Education

## Selkirk College

Website: [www.selkirk.bc.ca](http://www.selkirk.bc.ca)

Main Campus: Castlegar Area

Other Campuses: Castlegar (main campus), Grand Forks, Kaslo, Midway, Nakusp, Nelson, Trail, Winlaw

| Selkirk College Enrolment | 2003-04 | 2004-05 | 2005-06 | 2006-07 |
|---------------------------|---------|---------|---------|---------|
| Domestic Students         | 10,700  | 9,958   | 10,995  | 12,244  |
| International Students    | 254     | 275     | 298     | 252     |
| Total Student Headcount   | 10,954  | 10,233  | 11,253  | 12,496  |

*Source: BC Ministry of Advanced Education, 2008*

| Enrollment by Program     | Full Time | Part Time | Total |
|---------------------------|-----------|-----------|-------|
| Adult Basic Education     | -         | -         | 888   |
| Adult Special Education   | -         | -         | 5,969 |
| Applied and Professional  | -         | -         | 4,362 |
| Arts and Science          | -         | -         | -     |
| English Language Training | -         | -         | 196   |
| Other                     | -         | -         | -     |

*Source: Ministry of Advanced Education - Post-Secondary Central Data Warehouse Standards Report (June 2004), 2005.*

## Kootenay-Columbia School District 20

Website: [www.sd20.bc.ca](http://www.sd20.bc.ca)

The Kootenay-Columbia School District is located on the slopes of the picturesque Monashee and Selkirk Mountains, and in the valleys of the Lower Columbia River Basin. The district serves six municipalities and numerous small communities. Over 4200 school age students attend 14 schools, including eight elementary and three secondary schools and three alternate schools. The District also operates a Home Learner Program as well as a Community Education Program. Over 650 employees work for School District No. 20. Located in southwestern B.C., close to the U.S. border and on the Columbia River, our students are being prepared for a prosperous and productive future.

Castlegar has four elementary schools (Twin Rivers Elementary, Castlegar Primary, Kinnaird Elementary, Robson Community School) and a high school (Stanley Humphries).

| Average Class Size (2008)       | Kindergarten | Grade 1-3 | Grade 4-7 | Grade 8-12 |
|---------------------------------|--------------|-----------|-----------|------------|
| Kootenay Lake School District 8 | 16.5         | 20.5      | 26.9      | 24.3       |
| Province of British Columbia    | 17.7         | 20.6      | 25.8      | 24.4       |

Number of reported classes with assigned assistants: 137

Number of reported schools in school district: 11

Number of reported classes in school district: 514

Number of reported classes in school district with more than 30 students: 18

| School Name                 | Kindergarten | Grade 1 - 3 | Grade 4 - 7 | Grade 8 - 12 |
|-----------------------------|--------------|-------------|-------------|--------------|
| Castlegar Primary School    | 18.0         | 20.2        | -           | -            |
| Fruitvale Elementary        | 22.0         | 21.7        | 27.9        | -            |
| Glenmerry Elementary        | 14.0         | 20.0        | 27.2        | -            |
| J Lloyd Crow Secondary      | -            | -           | -           | 24.8         |
| James L Webster Elementary  | 12.5         | 20.7        | 22.8        | -            |
| Kinnaird Elementary         | 21.0         | 19.7        | 26.7        | -            |
| MacLean Elementary          | 16.0         | 20.8        | 28.0        | -            |
| Robson Community School     | 11.5         | 21.7        | 24.9        | -            |
| Rossland Secondary School   | -            | -           | 27.3        | 25.6         |
| Stanley Humphries Secondary | -            | -           | -           | 23.0         |
| Twin Rivers Elementary      | -            | 19.0        | 27.6        | -            |

Source: BC Ministry of Education, 2009

| Number of Students  | 2003/04 | 2004/05 | 2005/06 | 2006/07 | 2007/08 |
|---------------------|---------|---------|---------|---------|---------|
| Total               | 4,952   | 4,776   | 4,710   | 4,546   | 4,431   |
| Female              | 2,413   | 2,284   | 2,245   | 2,177   | 2,102   |
| Male                | 2,539   | 2,492   | 2,465   | 2,369   | 2,329   |
| Kindergarten        | 265     | 253     | 254     | 252     | 240     |
| Grade 1             | 284     | 267     | 263     | 257     | 270     |
| Grade 2             | 312     | 290     | 275     | 272     | 261     |
| Grade 3             | 333     | 300     | 291     | 267     | 275     |
| Grade 4             | 342     | 334     | 304     | 291     | 279     |
| Grade 5             | 342     | 342     | 353     | 313     | 305     |
| Grade 6             | 369     | 354     | 352     | 348     | 315     |
| Grade 7             | 410     | 390     | 352     | 353     | 359     |
| Grade 8             | 441     | 449     | 434     | 370     | 388     |
| Grade 9             | 437     | 437     | 445     | 438     | 381     |
| Grade 10            | 460     | 431     | 473     | 494     | 465     |
| Grade 11            | 461     | 474     | 442     | 447     | 444     |
| Grade 12            | 496     | 455     | 472     | 444     | 448     |
| Secondary Ungraded  | -       | -       | -       | -       | 1       |
| School-age          | 4,906   | 4,729   | 4,670   | 4,506   | 4,405   |
| Adult               | 46      | 47      | 40      | 40      | 26      |
| Aboriginal          | 455     | 442     | 419     | 403     | 409     |
| English as a Second | 19      | 13      | 7       | 16      | 20      |

|                  |     |     |     |     |     |
|------------------|-----|-----|-----|-----|-----|
| Language         |     |     |     |     |     |
| French Immersion | 122 | 155 | 140 | 173 | 170 |
|                  |     |     |     |     |     |
| Non-Resident     | 5.8 | 4.0 | -   | -   | 4.0 |

| <b>Number of Students in Programs</b>      | <b>2003/04</b> | <b>2004/05</b> | <b>2005/06</b> | <b>2006/07</b> | <b>2007/08</b> |
|--|----------------|----------------|----------------|----------------|----------------|
| Aboriginal Students in Aboriginal Programs | 352            | 330            | 335            | 323            | 367            |
| Female                                     | 167            | 154            | 163            | 158            | 179            |
| Male                                       | 185            | 176            | 172            | 165            | 188            |
|  |                |                |                |                |                |
| Career Preparation Program                 | 639            | 509            | 457            | 318            | 279            |
| Career Technical Program                   | -              | -              | 18             | 6              | -              |
| Co-operative Education Program             | 1              | 1              | -              | -              | -              |
| Continuing Education Program               | 26             | 25             | 24             | 18             | 19             |
| Distributed Learning Program*              | -              | -              | -              | 9              | -              |
| Secondary School Apprenticeship Program    | 12             | 1              | 12             | 4              | -              |
|  |                |                |                |                |                |
| English as a Second Language Program       | 19             | 13             | 7              | 16             | 20             |
| Female                                     | 8              | 6              | 3              | 7              | 8              |
| Male                                       | 11             | 7              | 4              | 9              | 12             |
|  |                |                |                |                |                |
| French Programs                            | 3,073          | 2,933          | 2,364          | 3,122          | 2,794          |
| Female                                     | 1,569          | 1,483          | 1,238          | 1,560          | 1,436          |
| Male                                       | 1,504          | 1,450          | 1,126          | 1,562          | 1,358          |
|  |                |                |                |                |                |
| Core French                                | 2,951          | 2,778          | 2,224          | 2,949          | 2,624          |
| French Immersion                           | 122            | 155            | 140            | 173            | 170            |
| Programme Francophone                      | -              | -              | -              | -              | 1              |
|  |                |                |                |                |                |
| Home School Registration                   | -              | -              | -              | 1              | 1              |
| Female                                     | -              | -              | -              | -              | -              |
| Male                                       | -              | -              | -              | -              | -              |

| <b>Number of Public Schools</b> | <b>2003/04</b> | <b>2004/05</b> | <b>2005/06</b> | <b>2006/07</b> | <b>2007/08</b> |
|---------------------------------|----------------|----------------|----------------|----------------|----------------|
| Total                           | 16             | 16             | 16             | 17             | 17             |
| Elementary                      | 8              | 8              | 8              | 8              | 8              |
| Elementary Junior Secondary     | -              | -              | -              | 1              | -              |
| Elementary Secondary            | 2              | 3              | 3              | 3              | 3              |
| Junior Secondary                | -              | -              | -              | -              | 1              |
| Middle School                   | 1              | -              | -              | -              | -              |
| Secondary                       | 5              | 4              | 4              | 5              | 5              |
| Senior Secondary                | -              | 1              | 1              | -              | -              |

| <b>Number of Teachers</b>  | <b>2003/04</b> | <b>2004/05</b> | <b>2005/06</b> | <b>2006/07</b> | <b>2007/08</b> |
|--|----------------|----------------|----------------|----------------|----------------|
| Female (Count)   | 171            | 167            | 165            | 155            | 162            |
| Male (Count)   | 104            | 100            | 100            | 99             | 89             |
| Female (FTE)   | 153.8          | 148.8          | 149.8          | 143.1          | 147.0          |
| Male (FTE)   | 100.3          | 96.6           | 96.0           | 95.4           | 86.5           |
| <b>Number of Principals, Vice-Principals and other District Administrative Staff</b> | <b>2003/04</b> | <b>2004/05</b> | <b>2005/06</b> | <b>2006/07</b> | <b>2007/08</b> |
| Total (Count)  | 24             | 20             | 24             | 25             | 26             |
| Total (FTE)  | 24             | 20             | 24             | 25             | 26             |
| <b>Number of Educators</b>   | <b>2003/04</b> | <b>2004/05</b> | <b>2005/06</b> | <b>2006/07</b> | <b>2007/08</b> |
| Total (Count)  | 299            | 287            | 289            | 279            | 277            |
| Total (FTE)  | 278.1          | 265.4          | 269.8          | 263.5          | 259.5          |
| Average Educator Age   | 47.7           | 47.8           | 48.0           | 48.4           | 48.1           |

Source: BC Ministry of Education, 2009

## Educational Choices

Kootenay-Columbia Virtual School, Distributed Learning Program (Grades K – 12)

The Kootenay Columbia Virtual School's Distributed Learning Program provides learning options for students requiring time-tabling flexibility or those who choose to enter into partnerships / blended programs with district schools or district alternative program service providers. The program offers district students the resources, support and instruction to plan and deliver distributed learning programming reflecting individual educational needs and delivery models.

Students in the program will have access to:

- Grade K-12 curriculum materials, including BC Ministry of Education prescribed learning outcomes and recommended learning resources and strategies;
- Individualized educational plans and assessment service;
- Ongoing instruction from experienced distributed learning teachers;
- Specialty classes in neighbourhood schools for grade 5 to 12 students;
- Distributed Learning courses(print and computer-based);
- On-line learning courses;
- District-approved and purchased, educational materials and services;
- District Resource Centre materials;
- Computer-based instruction where appropriate;
- District computer equipment/software for full-time students, where required;
- District cultural events/group and extra-curricular activities.

## Enrollment Requirements and Program Expectations

Registrations begin in May/June but are accepted throughout the school year. Birth certificates and a Care Card number are required with registration. Development of a Student Learning Plan and resource selection will begin after registration. Students and parents are required to enter into a written agreement with the district clearly outlining the expectations, roles and responsibilities of all of the education stakeholders.

## Contacts

Andrew Davidoff, Head Teacher, (250) 231-0466(Cell) (E-mail: [adavidoff@sd20.bc.ca](mailto:adavidoff@sd20.bc.ca))  
(250) 364-1275 (Ext 260) (250) 365-7735 (Ext 527)

Bob Minosky, Principal  
(250) 368-2232 (E-mail: [bminosky@sd20.bc.ca](mailto:bminosky@sd20.bc.ca))

# Health

The Castlegar Local Health Area (LHA) is one of 31 LHAs within Interior Health and one of 7 located in the Kootenay Boundary Health Service Area (KBHSA).

## Population and Demographics

The population (13,271) of the Castlegar LHA is the third largest of the 7 LHAs located within the Kootenay Boundary Health Service Area (KBHSA). Over the last 10 years, the median age of the Castlegar population has increased by 6.4 years from 38.4 to 44.5; a trend seen throughout Interior Health. The median age of the Castlegar LHA population is the second lowest among the 7 KBHSA LHAs. The population of the Castlegar LHA is projected to decrease by 0.3% over the period from 2009 to 2014, while the Interior Health growth rate is projected to increase by 4.4% over the same period. Over the next 5 years, the youth population (less than 20) is projected to decrease by 15.3%. The remaining age groups are projected to increase in population, with the largest growth projected for the 85+ age group.

## Health Status

Health Status indicators focus on a range of measures such as health conditions, human function, wellbeing, and death. Castlegar's life expectancy at birth of 79.3 years is lower than that for the KBHSA (79.9), IH (80.0), and British Columbia (80.9). Low birth weight infants (< 2,500 grams) have increased risks of morbidity and premature death. The Castlegar rate of low birth weight infants is 49.9 per 1,000 live births, which is lower than the KBHSA (54.1), Interior Health (53.8) and British Columbia (54.7) rates. The Standardized Mortality Ratio (SMR) is the ratio of the number of deaths occurring to residents of a geographic area (e.g. Castlegar LHA) to the expected number of deaths in that area based on provincial age-specific mortality rates. An SMR less than 1 indicates fewer observed deaths than expected while an SMR greater than 1 indicates more deaths than expected. The SMR (all causes of death) for Castlegar is 1.21 which means there were more deaths than expected, given provincial rates. Please note that this number is statistically significant. Diseases of the Circulatory System were the leading cause of death in the Castlegar LHA and accounted for 35.5% of the total deaths in the LHA.

## Non-Medical Determinants of Health

Non-medical determinants of health describe behaviours, living and working conditions, personal resources, and environmental factors that have the potential to influence human health.

**Median Share of Income** - This indicator shows the percentage of the total personal income that was earned by households below the median household income. Median share of income is a measure of income inequality with a value of 50% representing no inequality because the lowest half of income earners is earning half of the total income. As the median share of income decreases, there is an increase in income inequality. Research has shown that income inequality is a predictor of health status and a major contributor to health inequities. The Castlegar LHA residents had a higher median share of income than British Columbia and the Kootenay Boundary HSA, but lower than Interior Health.

**Housing affordability** – The percentage of households (renters, owners, and total) spending 30% or more of total household income on shelter expenses. Shelter expenses include payments for electricity, oil, gas, coal, wood or other fuels, water and other municipal services, monthly mortgage payments, property taxes, condominium fees and rent. As a general rule, households are considered to have affordability problems if more than 30% of household income is spent on housing costs. At that level of spending, it is likely that inadequate funds will be available for other necessities such as food, clothing, and transportation. Housing affordability problems affect

renters more than owners. Band housing on Indian reserves was not included in the calculation of housing affordability. The Castlegar LHA had a lower rate of affordable housing than residents of Kootenay Boundary HSA, Interior Health, and British Columbia. This means a smaller percentage of residents spent 30% or more on shelter expenses than residents in these regions.

**High School Graduation** – The percentage of population aged 25 to 29 who have a high school graduation certificate. It is a measure of educational attainment and socio-economic status. The Castlegar LHA had a lower proportion of residents who graduated high school than the Kootenay Boundary HSA, but a higher proportion than Interior Health and British Columbia.

**Unemployment (youth and adult)** - Labour force aged 15 and over (and for youths, aged 15 to 24 years) who did not have a job during the reference period. This indicator is a traditional measure of the economy. Unemployed people tend to experience more health problems. The Castlegar unemployment rate (youth and adult) is higher than the Kootenay Boundary HSA, Interior Health, and British Columbia rates.

**Leisure-Time Physical Activity** - This indicator identifies the proportion of the population over the age of 12 who were classified as active or moderately active based on responses to questions about the frequency, duration and intensity of their leisure-time physical activity. Regular physical activity reduces the risk of developing chronic diseases, helps to control weight and promotes psychological well-being. Studies have shown that an increase in physical activity would reduce healthcare expenditures.

**Healthy Eating** - This indicator shows the proportion of the population over the age of 12 who eat the daily recommended level of fruits and vegetables. 30% of cancer and diabetes cases and 20% of cardiovascular disease can be attributed to poor nutrition. Illness resulting from poor nutrition is estimated to cost the province over \$800 million per year. Hospital costs for major diet-related diseases alone exceed \$80 million per year in British Columbia.

**Overweight/Obesity** - This indicator identifies the proportion of population over the age of 18, excluding pregnant females, classified as overweight or obese based on self-reported height and weight (Body Mass Index). Obesity is a major risk factor for many chronic illnesses, including cardiovascular diseases, type 2 diabetes and some types of cancer.

**Tobacco Use** - This shows the proportion of population over the age of 15 who are daily or occasional smokers. Cigarette smoking is the primary risk factor for the top three causes of death in Canada: diseases of the circulatory system, cancers and respiratory diseases. Preventing and reducing tobacco use can also have immediate impacts on hospital admissions for many diseases, such as asthma and hypertension.

Kootenay Boundary HSA residents have a higher percentage of population who are physically active in their leisure time, and a higher percentage of people who eat healthy when compared to Interior Health and BC. The KBHSA has a higher rate of tobacco use and obesity than British Columbia, but lower rates than Interior Health.

## Health Service Performance

Accessibility is a key measure of health care services provided in any jurisdiction. Interior Health's network of health care facilities provides for the provision of basic acute care services in rural communities, while centralizing specialized services in nearby urban centres. Residents from the Castlegar LHA receive urgent care services at the Castlegar & District Community Health Centre in Castlegar while those requiring acute care services and specialized services travel to the Kootenay Boundary Regional Hospital in Trail. Over two-thirds (69.9%) of Castlegar inpatients received treatment at Kootenay Boundary Regional Hospital (KBRH). Overall, over 80% of Castlegar LHA inpatient cases were treated at hospitals within the Kootenay Boundary Health Service Area (KBHSA).

## Community and Health System Characteristics

The availability of residential care beds and assisted living units in the Castlegar LHA is higher than the equivalent rate for IH as a whole. Utilization measures indicate that Castlegar LHA residents use the available assisted living, residential care, and home support services at rates exceeding those for IH as a whole.

| Indicators  | Castlegar LHA | Kootenay Boundary HSA | Interior Health |
|---|---------------|-----------------------|-----------------|
| Residential Care Beds per 1,000 Population 75+ (2008) | 105.4         | 83.1                  | 81.4            |
| Assisted Living Units per 1,000 Population 75+ (2008) | 15.1          | 15.8                  | 14.9            |
| Home Support Clients per 1,000 Population 65+ (2008)  | 38.3          | 36.4                  | 29.4            |
| Residential Care Days per 1,000 Population 75+ (2008) | 42,079        | 29,386                | 27,728          |
| Assisted Living Days per 1,000 Population 75+ (2008)  | 5,489         | 5,761                 | 5,042           |
| Home Support Hours per 1,000 Population 75+ (2008)    | 12,974        | 12,815                | 11,188          |

*Source: Castlegar Local Health Area Profile, 2009*